



POST Lab Mapping Experience



Vincent Kampira



Laboratory Mapping Team



Thematic Areas identified



Institutionalisation & integration



Implementation experiences & updates



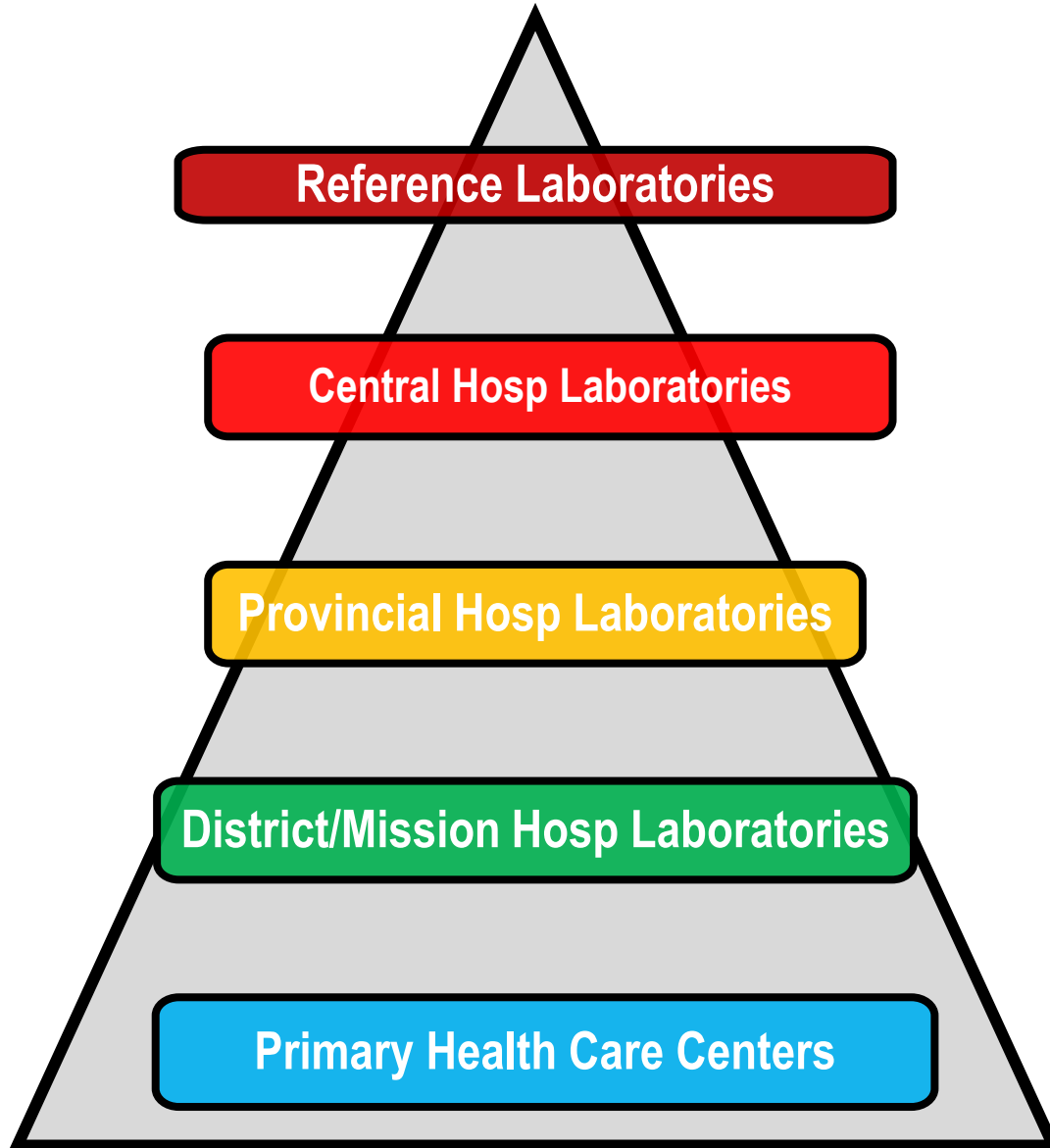
Updating of dataset



Monitoring and review
Lessons Learnt and Best practices



Zimbabwe Tiered System



- +/- 1,634 Health Facilities (public & private)
- 3 Reference laboratories
- 10 Provincial Hospitals
- 5 Central Hospitals
- 102 Mission/District hospitals
- 112 Primary Health care labs

- 232 Public Health Labs in Total

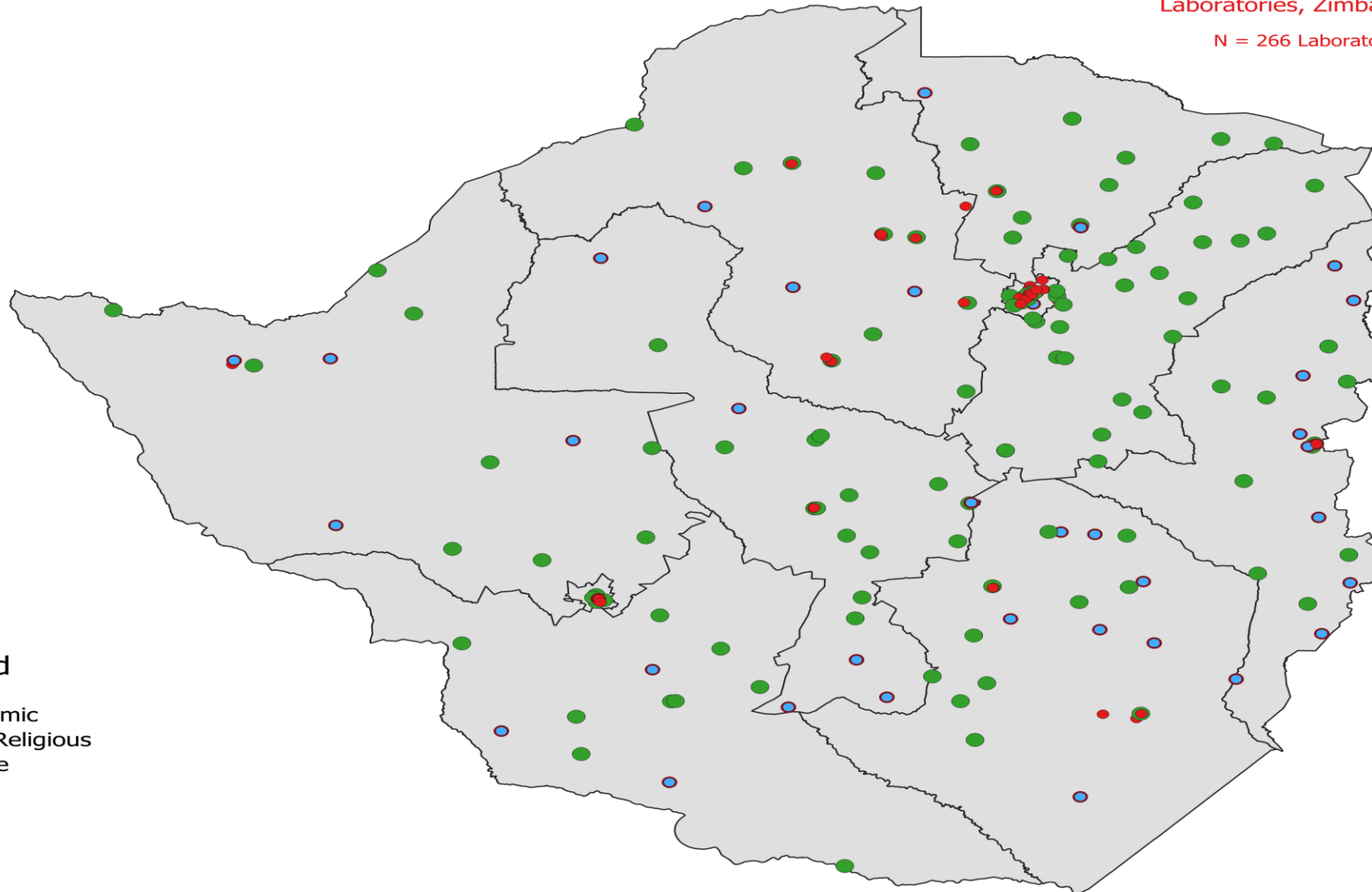
Labs mapped by Affiliation : Jan 2023

Laboratories, Zimbabwe

N = 266 Laboratories

Legend

- Academic
- NGO-Religious
- Private
- Public



Thematic Areas Identification : Lab mapping & LabNet Assessment

Thematic Area-Lab Mapping

- Calibration of equipment within the tiered system
- Variation of testing menu within tier and across tiers
- Non aligned tiers with MOH laboratories vs. private, animal and environmental health labs
- Accreditation of provincial and central level laboratories
- Biosafety level 3 laboratories to handle priority pathogens
- Few facilities offering drug resistance monitoring services

Thematic Area -LabNet

- Molecular microbiology capacity
- National Policy & Plans (strategic plan & Lab policy)
- Surge capacity plans
- Laboratory data Unit-data analysis and sharing
- Equipment maintenance

Thematic Area-LabNet

- 17043 accreditation
- Biosafety & Biosecurity
- Laboratory workforce
- Supply chain management-emergencies & IVDs

Institutionalisation & Integration

Lab Mapping

- After extensive data cleaning & analysis an operational plan was developed
- The operational plan was presented to the Director laboratory services for adoption
- All findings & recommendations will be channelled through the director & actions items were assigned to Labnet team as applicable
- DLS & Labnet team are working closely to start drive the implementation of the recommendations

LabNet assesment

- Presented the labnet assessment findings to the lab TWG
- Prepared an operational plan to address labnet assessment findings
- Presented laboratory mapping operational plan to the lab TWG
- Some identified thematic areas are to be incorporated in the National laboratory strategic plan which is set for review early 2025

Thematic Area-LabNet

- These include the following:
- Establishment of laboratory data unit
- Revision of NLSP to include the one health concept
- Specimen storage & Bio banking

Implementation experiences... lab Mapping

Description of Gap	Recommendations	Status
No established center implementing calibration of equipment that is accredited in ISO 17025	Establishment of a national calibration center that is closely linked to the laboratory network, capable of supporting veterinary, environmental and human health equipment calibrations.	Calibration center setup @ NMRL is complete The center is now working towards achieving accreditation in 17025 standard Once accreditation is achieved the center will provide calibration services to all public health laboratories in the diagnostic network
Not all provincial and central level laboratories are accredited/ Nationally Certified	All provincial and central level laboratories should be accredited/Nationally Certified	National certification audits are under way and all central hospital labs have been enrolled . All provincial labs are accredited
Limited access/availability of Biosafety Level-3 laboratories	Invest in upgrading existing labs or constructing new facilities to include Biosafety Level-3 to be able to handle priority pathogens	BSL3 container lab for NMRL was installed & commissioned. NTBRL BSL3 under renovations. We have 2 BSL3 labs in Zimbabwe

Implementation experiences... lab Mapping

Description of Gap	Recommendations	Status
Lack of certified Biological Safety Cabinets (BSCs) in some labs	Provide certification and maintenance services for all BSCs to ensure safety standards.	Engaged service provider & they revised their processes & we agreed on the certification. Service & certification of all BSCs already in progress
Incomplete waste management protocols	Develop and enforce comprehensive guidelines for waste management, including liquid and solid waste.	Guidelines were prepared updated & disseminated . Construction of incinerators still in progress
Usage of LIMS does not cover all the departments. Currently, LIMS usage is limited to HIV, TB, and COVID-19	LIMS coverage to include all laboratory departments for effective data tracking and management.	Conducted a LIMS super user training. Facilities have begun upgrading to include other tests in LIMS. Results are impressive as 30% of labs have added at least 3 more tests
Currently, the genomic sequencing capability is limited to only two of the priority pathogens - SARS-CoV-2 & cholera	Leverage current technology within the country to expand the scope of genomic sequencing to include more pathogens	MISEQ platform available @ NMRL & Sanger sequencer under procurement-GF NMRL received training on bacterial sequencing & trained Bulawayo on C19 TB DRS is underway & in country trainings will be done on TB sequencing

Updating the lab mapping data set

Lab Mapping

- Jan 2023 266 labs were mapped. 115 were public health labs
- We improved Tb EQA using Kobo tool box & collected geo coordinates on some of the unmapped labs
- We have engaged Chief laboratory scientists in provinces to update our list of public health labs as this was another gap

Lab Mapping

- Merged that document with lab mapping data set and the Kobo EQA data set to have coordinates on public health labs
- We have 232 public health labs
- As @ January 2023 50% of labs were mapped
- With the Kobo innovation we have mapped up to 78% of the public health labs

Lab Mapping

- 50 labs remain unmapped because they are not covered under the TB EQA
- We are working on a self assessment tool to map the remaining public labs

Monitoring & review

NC Report no.	Component	Current Situation	ASLM Recommendation as next steps	Level of Maturity	Country Action Points	Assigned to	Due date
Capability 1: . Political, legal, regulatory and financial framework							
	National Policy and Plans	Revised national laboratory policy 2022- 2026 has been finalized and submitted for approval. However, it will have short time for implementation after approval and, the One Health component has not been addressed	Plan for a meeting with all stakeholders representing all other areas on One Health approach in order to address the gaps in the current policy Follow up the national laboratory policy to make sure it is approved and disseminated across all relevant public and private sectors. Consider reviewing the time period of the policy.	1	1. Establish TWG and TORs with One Health Concept. 2. Review and approve National laboratory Policy.	M Makaya, L Mugari,	31-Dec-24
		The National Laboratory Strategic Plan has been developed and activities budgeted for, including for emergency activities but the NLSP is pending approval	Similar to the National Laboratory Policy, update the National Laboratory Strategic Plan to include the One Health approach, approve it and disseminated across all the stakeholder	1	1. Review the NLSP to align with one health approach and current operational activities.	M Makaya, L Mugari,	30-Apr-25

Lessons Learnt and Best practices

- Operational plans are constantly discussed & updates given during the DLS meetings
- We have a previous DNO report & DLS is working to do another comprehensive DNO with all relevant stakeholders using PLANWISE .DNO gives better results when everyone is involved.
- We have seen that leveraging on existing funding & programs can help address identified gaps and bring better outcomes.(TB EQA)
- Comparing the heat map from lab mapping & country priority diseases there are some gaps. Testing capacity on some of the country priority diseases was not evaluated during the last lab mapping exercise & we are working on addressing that gap through self assessment using a revised tool.

